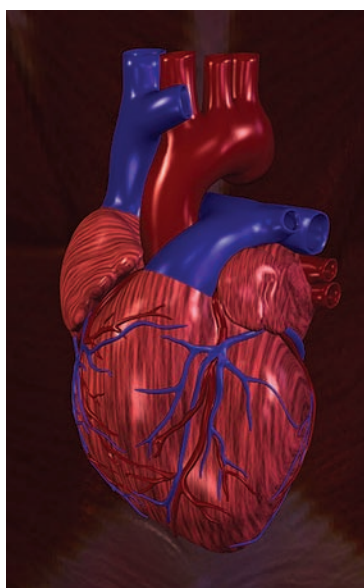


Lab Updates

An archive of *Lab Updates* is posted on Our Net or external web site: <http://www.ummlabs.org>

Non-HDL Cholesterol as a Predictor of Cardiovascular Disease in Patients with Diabetes



THE ADULT TREATMENT PANEL III (ATP III) of National Cholesterol Education Program (NCEP) recommends that non-HDL Cholesterol be used as second target therapy in people with triglyceride levels greater than 200 mg/dL, especially those with diabetes or the metabolic syndrome. There are several advantages to non-HDL cholesterol measurement.

- No assumption is made about the relationship between VLDL cholesterol and triglycerides. In patients with diabetes, this relationship can be altered, leading to falsely low LDL values as calculated by the Friedewald formula, especially in conjunction with elevated triglyceride levels.
- Non-HDL cholesterol includes an assessment of all apolipoprotein B-containing lipoproteins considered to be atherogenic, i.e., VLDL, intermediate-density lipoprotein (IDL), and LDL, and even lipoprotein(a).
- Non-HDL cholesterol has several practical advantages in a clinical setting, including the ability to be assessed in patients with triglyceride levels >400 mg/dl and in patients who are not fasting.

Risk categories and their respective LDL-C and Non HDL-C goals

Risk Category	LDL-C Goal (mg/dL)	Non-HDL-C Goal (mg/dL)
CHD and CHD risk equivalents (10-Year risk >20%)	<100	<130
≥2 Risk factors (10-Year risk ≤20%)	<130	<160
0-1 Risk factor	<160	<190

Effective May 7, 2007, non-HDL Cholesterol level (Total Cholesterol – HDL-C) will be added to the CFR (Lipid) profile.

If you require further information or have comment or concerns, please contact:

Dr. L.V. Rao, Director, at 508-334-7593 or via email at RaoL@ummhc.org

Dr. Haas at 508-755-1222 or via email at HaasR@ummhc.org

Dr. Ockene at 508-856-3907 or via email at Ira.Ockene@Umassmed.edu

**UMass Memorial
Medical Center**
One Biotech Park, Suite 200
365 Plantation Street
Worcester, MA 01605-2376
Telephone: 508-334-2863
or 800-476-4431
www.ummlabs.org
Fax: 508-334-4210
Email: LabsCS@ummhc.org
L. Michael Snyder, MD
Chairman
Guy M. Vallaro, Ph.D.
Vice President
Clinical Laboratories

Changes in Therapeutic Drugs Testing Specimen Requirements

RED TOP (No Gel) vs SST (GEL) Tubes

Effective May 7, 2007, the lab will not perform therapeutic drug testing* on serum specimens collected in SST (Gel) tubes. This is based on internal studies and available literature showed significant differences (20-50% bias) in the recovery of the drugs between gel and no gel tubes with overall poor correlation. Based on above, toxic levels of drugs can be missed if serum collected in gel tubes.

Please collect specimens for drugs in red top only, no gel tubes.

*Acetaminophen, Amikacin, Carbamazepine, Digoxin, Gentamicin, Lidocaine, Lithium, NAPA, Phenytoin, Phenobarbital, Primidone, Procainamide, Salicylates, Tobramycin, Theophylline, Quinidine, Valproic acid, Vancomycin.

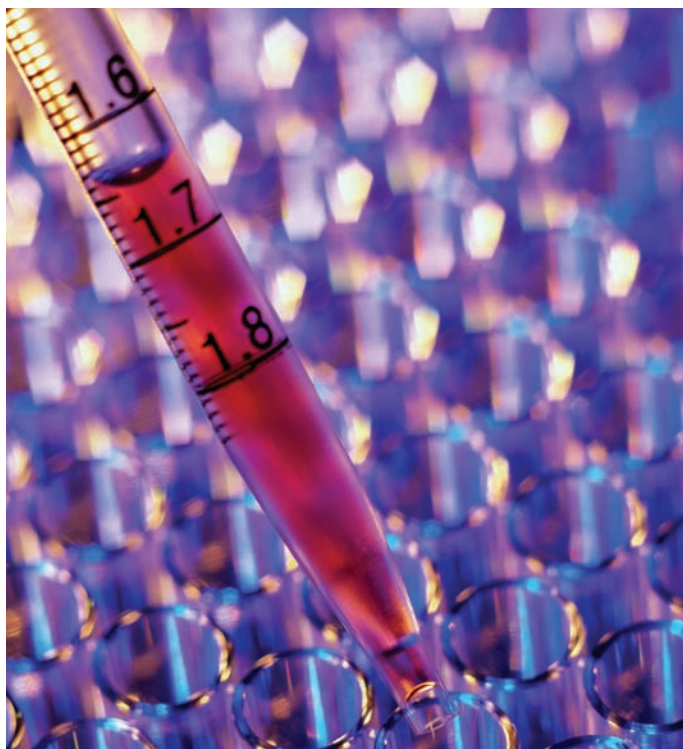
If you require further information or have comment or concerns, please contact:

Dr. L.V. Rao, Director, at 508-334-7593 or via email at RaoL@umhmc.org

Ms. Judy Rennell, Manager, at 508-334-3803 or via email at Rennellj@umhmc.org



Changes in HIV Serology Testing



Effective April 30, 2007, HIV serology testing will be performed using a highly automated HIV-1/O/2 micro particle chemiluminiscent immunoassay. This assay is for the specific detection of antibodies to HIV-type-1, including group 'O' and /or Type-2 in serum plasma. This assay was performed currently by semi automated Genetic system HIV-1,2 and "O" EIA.

Internal validation studies demonstrated excellent correlation between both the assays. There will be no changes in the specimen requirements or reporting format.

If you require further information or have comment or concerns, please contact:

Dr. L.V. Rao, Director, at 508-334-7593 or via email at RaoL@umhmc.org

Ms. Rachel Ambacher, Manager, at 508-334-7316 or via email at Ambacher@umhmc.org.

New Patient Service Center Opens

We are one of the largest laboratory providers in New England

UMass Memorial Laboratories recently opened a Patient Service Center (phlebotomy draw station) at 136 High St. Ext., Lancaster, MA.

The vision of UMass Memorial Laboratories is:

- To be one of the top ten academic medical center-based laboratories in the United States by 2008, as well as
- To be the leader in laboratory services through our network of a regional laboratory and satellite rapid response laboratories that meet the needs of patients and providers throughout New England



136 High St. Ext., Lancaster, MA

The Lancaster Patient Service Center is located at 136 High Street Ext., Lancaster, MA. The hours are Monday through Friday 8:00am-5:00pm, closed 12:00pm-1:00pm. The phone number at the Lancaster PSC is 978-368-1683.

UMass Memorial Laboratories Patient Service Center (PSC) Locations

Central Massachusetts Locations

UMass Memorial/University Campus

55 Lake Ave. North
Worcester, MA 01655
Mon–Fri 7:30am - 5:30pm
508-856-7797

City Hospital PSC

26 Queen St., 1st Floor
Worcester, MA 01610
Mon–Fri 8:00am - 5:00pm
Closed 12:00pm - 1:00pm
508-334-7881

Grove Medical PSC

26 Queen St., 6th Floor
Worcester, MA 01610
Mon–Fri 8:00am - 5:00pm
Closed 12:15pm - 1:15pm
508-334-0275

Vernon Medical PSC

10 Winthrop St., Building 1, 2nd Floor
Worcester, MA 01604
Mon–Fri 8:00am - 5:00pm
508-831-0624

Sterling PSC

104 Leominster Rd.
Sterling, MA 01564
Mon–Fri 8:00am - 5:00pm
978-422-5109

Westboro PSC

154 Main St.
Westboro, MA 01581
Mon 7:30am - 4:30pm
Tues–Thurs 8:30am - 5:30pm
Fri 7:00am - 4:00pm
Closed 12:30pm - 1:30pm
508-836-3674

Medical Office Building

25 Oak Ave.
Worcester, MA 01605
Mon–Fri 8:00am - 5:00pm
508-792-3656

Clinton PSC

201 Highland St., 2nd Floor, Suite 1
Clinton, MA 01510
Mon–Fri 8:00am - 5:00pm
Closed 12:30 - 1:30pm
978-368-3743
978-368-3704

UMass Memorial/Memorial Campus

119 Belmont St.
Worcester, MA 01605
Mon–Fri 7:00am - 6:00pm
Sat & Sun 8:00am - 1:00pm
508-334-6486

Medical Office PSC

116 Belmont St.
Worcester, MA 01605
Mon–Fri 8:00am - 5:00pm
Closed 12:15pm - 1:15pm
508-753-6854

Belmont Street PSC

67 Belmont St.
Worcester, MA 01605
Mon–Fri 8:00am - 5:00pm
Closed 12:15pm - 1:15pm
508-334-5396

Women's Health PSC

100 Central St., 3rd Floor
Worcester, MA 01605
Mon–Fri 8:00am - 5:00pm
508-757-4637

Northboro PSC

112 Main St.
Northboro, MA 01532
Mon–Fri 8:00am - 5:00pm
Closed 12:15pm - 1:15pm
508-393-3704

Fitchburg PSC

HealthAlliance/Burbank Hospital Campus
275 Nichols St.
Fitchburg, MA 01420
Mon–Fri 8:30am - 5:30pm
Closed 12:30pm - 1:30pm
978-665-5914

Marlboro PSC

320 Bolton St., Suite G1
Marlborough, MA 01752
Mon–Fri 8:00am - 5:00pm
Closed 11:15am - 12:15pm
508-229-0574

UMass Memorial/Hahnemann Campus

281 Lincoln St.
Worcester, MA 01605
Mon–Fri 7:00am - 5:30pm
508-334-8100

Hahnemann Professional PSC

291 Lincoln St.
Worcester, MA 01605
Mon–Fri 8:30am - 5:00pm
Closed 12:30pm - 1:00pm
508-792-8208

Park Avenue PSC

255 Park Ave., Suite 210
Worcester, MA 01609
Mon–Fri 8:00am - 5:00pm
Closed 12:15pm - 1:15pm
508-798-5127

Shrewsbury PSC

604 Main St.
Shrewsbury, MA 01545
Mon–Fri 8:00am - 5:00pm
Closed 12:15pm - 1:15pm
508-845-6521

Julio Drive PSC

26 Julio Dr.
Shrewsbury, MA 01545
Mon–Fri 8:00am - 5:00pm
Closed 12:00pm - 1:00pm
508-845-3615

Holden PSC

52 Boyden St.
Holden, MA 01520
Mon 8:30pm - 2:30pm
Tue–Fri 7:00am - 3:30pm
Closed 12:30pm - 1:00pm
508-829-8262

Douglas PSC

15 West St.
Douglas, MA 01516
Mon–Fri 8:00am - 12:00pm
508-476-2365

Lancaster PSC

136 High St. Ext
Lancaster, MA 01523
Mon–Fri 8:00am - 5:00pm
Closed 12:00 - 1:00pm
978-368-1683

UMass Memorial Laboratories Patient Service Center (PSC) Locations

Eastern Massachusetts Locations

North Andover PSC

451 Andover St., Suite 206
North Andover, MA 01845
Mon–Thurs 7:30am - 4:30pm
Fri 7:00am - 4:00pm
Closed 12:15pm - 1:15pm
978-989-9238

Chestnut Green PSC

565 Turnpike St.
North Andover, MA 01845
Mon–Fri 7:30am - 4:30pm
Closed 12:15pm - 1:15pm
978-989-9472

Turnpike Street PSC

630 Turnpike St.
North Andover, MA 01845
Mon–Fri 8:00am - 5:00pm
Closed 12:15pm - 1:15pm
978-989-9416

Raynham, MA

(Opening June, 2007)

Framingham PSC

61 Lincoln St.
Framingham, MA 01702
Mon–Fri 8:00am - 5:00pm
Closed 12:15pm - 1:15pm
508-370-7259

Brockton PSC and Laboratory

1073 Pleasant St.
Brockton, MA 02301
Mon–Fri 8:00am - 5:00pm
508-559-2158

Lexington Street PSC

6 Lexington St., 2nd Floor
Waltham, MA 02453
Mon–Fri 8:00am - 4:30pm
Closed 12:00pm - 12:30pm
781-647-0352

Waltham PSC

20 Hope Ave., Suite G03
Waltham, MA 02453
Mon–Fri 8:00am - 5:00pm
Closed 12:15pm - 1:15pm
781-899-2586

Hyannis PSC

700 Attucks Lane, Suite 1D
Hyannis, MA 02601
Mon–Fri 8:00am - 5:00pm
Closed 12:15pm - 1:15pm
508-790-5723

Wilmington PSC

64 Concord St., Suite D
Wilmington, MA 01887
Mon–Fri 8:30am - 5:00pm
Closed 12:15pm - 12:45pm
978-694-1581

New Hampshire Locations

Exeter NH PSC

19 Hampton Rd., Unit 10-B
Exeter, New Hampshire 03833
Mon–Fri 8:00am - 5:00pm
Closed 12:15pm - 1:15pm
603-775-0165

Salem NH PSC

32 Stiles Rd., Suite 209
Salem, NH 03079
Mon–Fri 8:00am - 5:00pm
Closed 12:15pm - 1:15pm
603-890-0165